



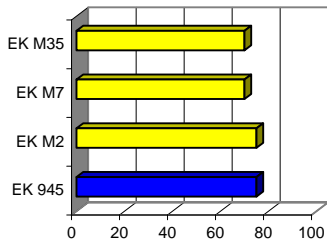
Erasteel's EK 945

Wedevåg introduces special drills made from Erasteel's new EK 945 cobalt alloy material. This is a high speed steel Cobalt Steel (HSSCo) that is the result of new developments in the alloy technology in Sweden - a principal supplier of specialty steels for centuries.

The high C/V ratio gives heat treated EK 945 a very high martensite hardness. As a result, it retains its wear resistance in spite of reduced carbide volume.

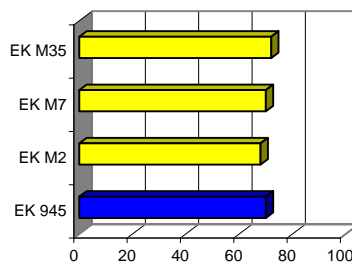
Erasteel's EK 945 is the first cobalt alloyed high speed steel to be made using modern low alloy methods. A 2.5% of cobalt is sufficient to give EK 945 a performance which exceeds that of M2 and M7 and is comparable with that of M35.

Machinability in the annealed condition.



	EK 945	EK M2	EK M7	EK M35
■ Machinability in the annealed condition.	75	75	70	70

Wear Resistance



	EK 945	EK M2	EK M7	EK M35
■ Wear Resistance	70	68	70	72

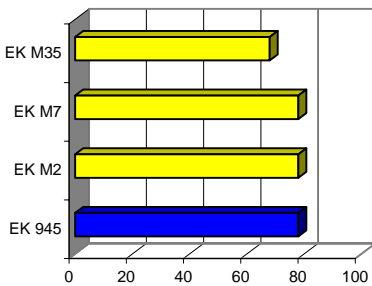
Erasteel's EK 945 Features:

Good hardness, toughness and wear resistance.

A high C/V ratio and a Co content of 2.5%

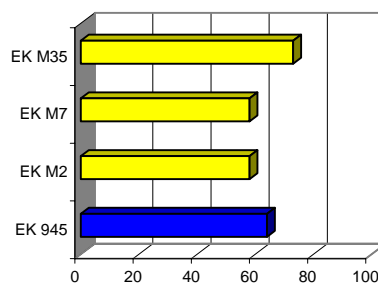
Suitable for steam tempering, nitriding and coating, e.g. with TiN.

Toughness



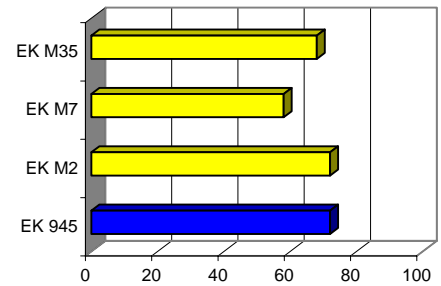
	EK 945	EK M2	EK M7	EK M35
■ Toughness	78	78	78	68

Hot hardness



	EK 945	EK M2	EK M7	EK M35
■ Hot hardness	64	58	58	73

Grindability



	EK 945	EK M2	EK M7	EK M35
■ Grindability	72	72	58	68